

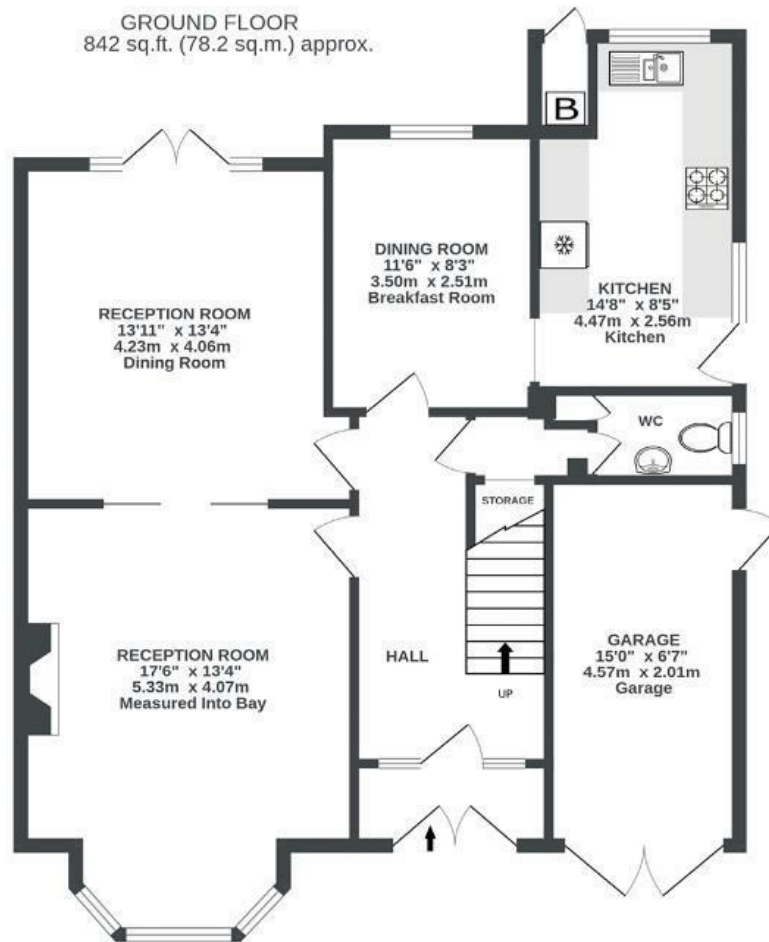
# The Crescent

## HENLEAZE

APPROXIMATE FLOOR AREA  
143.7 SQM / 1547 SQFT



GROUND FLOOR  
842 sq.ft. (78.2 sq.m.) approx.



1ST FLOOR  
705 sq.ft. (65.5 sq.m.) approx.



Illustrations are for reference purposes only, measurements are approximate, not to scale.

**Boardwalk**

# The Crescent

HENLEAZE, BRISTOL

£

£900,000



BS9 4RW

zzz

4 Bedrooms



2 Bathrooms

*We have loved our short time here. The garden for us was one of the key selling points - I love it when the boys come home from school and ask if we can play football in the garden. The home is great entertaining space too, we've had some lovely family celebrations and when it's a sunny day the rooms at the back of the house light up. It's a very cozy house, with amazing potential for a new buyer to put their mark on it...we had big plans, but life throws things at you that are unexpected!*

